



Your truly perfect and top choice

Make ideal nutrients for precision agriculture



Soil Conditioner



01

GREEMIC (MICROBIAL)
PROTEINIC (MICROBIAL)
HUWIN 80 (BALL)
HUWIN 50 (BALL)
HUWIN 40 (BALL)
HUMIC AMINO(BALL)
SEAWEED 80 (BALL)
SEAWEED 70 (BALL)
LIGNITE POWDER (HUMIC RAW 70)
LIGNITE POWDER (HUMIC RAW 60)
LIGNITE POWDER (HUMIC RAW 30)
SAND FIXER
SALT DELETE

Biostimu & Anti-stress



02

FUWIN 100 (MICRO GRANULE)
FUWIN 100 (SUPER FLAKE)
HUWIN 100 (SHINY FLAKE)
HUWIN 100 (FINE POWDER)
HUWIN 99 (FLAKE)
HUWIN 99 (GRANULE)
HUWIN 98 (FLAKE)
HUWIN 95 (FLAKE)
SEAWEED 100 (FLAKE)
SEAWEED 100 (BLACK MICRO GRANULE)
SEAWEED 100 (GREEN MICRO GRANULE)
SEAWEED 1881 (ENZYME POWDER)
SEAWEED 1881(ENZYME LIQUID)
CHITOSAN OLIGOSACCHARIDE (POWDER)
FISH PROTEIN PEPTIDE (POWDER)

Disease-Resistant & Immune Booster



03

CALCIUM AMMONIUM NITRATE
POTASSIUM NITRATE
MKP
MKPI
Magnesium Sulfate Monohydrate
Magnesium Sulfate Heptahydrate
SODIUM HUMATE (SHINY FLAKE)
EDDHA Fe 6% (Ortho 4.8)
EDTA Fe
EDTA Zn
EDTA Mn
EDTA Cu
EDTA Mg
EDTA Ca
EDTA POWER

Lifecycle Maintenance Program



04

BIOSTIMU
DOCTOR PLANT
COPPER MAN
ZINC AMINO SUSP .
CALCIUM AMINO SUSP.
POTASSIUM AMINO SUSP.
CALCIUM POWER
BORON BALANCE
BORON SEAWEED
ZINC SEAWEED
CALCIUM SEAWEED
HUMIMAX
FULVIMAX

Raw Fertilizer



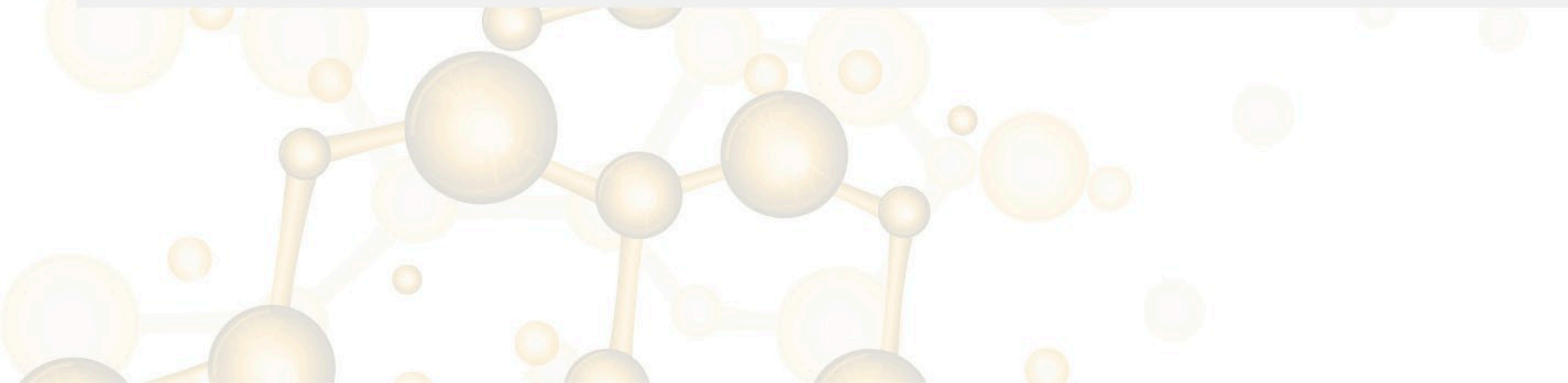
05

RHIZOCARE (BACILLUS)
NITRORICH 30-10-10 + TE
UNIVITA 20-20-20 + TE
ROOTGEN
COLORGEN
FRUITGEN 0-0-40 +TE
ALGAMAX
ABIORESIST
NEMATICIDAL PRO
NEMATICIDAL PLUS
NEMATICIDAL MAX



Soil Conditioners

Product Name	Composition	Physical Form (W / V)
GREEMIC (MICROBIAL)	Bacillus>10 ⁹ CFU/g, Humic>10%, Fulvic>5%, N>2%, P>0.5%, K>2%, Ca>3%, Mg>0.8%, S>2.5%, Organic Carbon>20%, pH5-6	2-4MM BALL
PROTEINIC (MICROBIAL)	Bacillus >5 ⁹ CFU/g, Si+Mg+Ca>6%, Protein>25%, Organic Carbon>45%, pH5-6	2-4MM BALL
HUWIN 80 (BALL)	Humic>30%, Fulvic>5%, NPK>3%, Organic Carbon>28%, pH4-5	2-4MM BALL
HUWIN 50 (BALL)	Humic>50%, Organic Carbon>26%, pH4-5	2-4MM BALL
HUWIN 40 (BALL)	Humic>40%, Organic Carbon>20%, pH4-5	2-4MM BALL
HUMIC AMINO (BALL)	Humic>20%, Amino>8%, NPK>12%, Water Soluble>80%, Organic Carbon>24%, pH4-5	2-4MM BALL
SEAWEED 80 (BALL)	Seaweed Extract>20%, CaO+MgO>5%, Organic Carbon>25%, pH5-6	2-4MM BALL
SEAWEED 70 (BALL)	Seaweed Extract>10%, CaO>9%, Organic Carbon>23%, pH6-7	2-4MM BALL
LIGNITE POWDER (HUMIC RAW 70)	Free humic >70%, Moisture<30%, pH4-5	80 MESH POWDER
LIGNITE POWDER (HUMIC RAW 60)	Free humic >60%, Moisture<28%, pH4-5	80 MESH POWDER
LIGNITE POWDER (HUMIC RAW 30)	Free humic >30%, Moisture<26%, pH4-5	80 MESH POWDER
SAND FIXER	Organic matter >100g/L (Glucose Source), pH 7	DENSITY : 1.1
SALT DELETE	Amino acid 80g/L, NPK 100g/L, Organic Matter 200g/L, Fish Protein Peptide 20g/L, Ca 100g/L +Ectoin	DENSITY : 1.15





Biostimu & Anti-stress

Product Name	Composition	Physical Form (W / V)
FUWIN 100 (MICRO GRANULE)	Humic>55%, Fulvic>55%, Alginic>2%, K ₂ O>12%, Water Soluble 100%, pH9-10	1MM MICRO GRANULE
FUWIN 100 (SUPER FLAKE)	Humic>50%, Fulvic> 50%, Alginic>2%, K ₂ O>12%, Water Soluble 100%, pH9-10	1MM SUPER FLAKE
HUWIN 100 (SHINY FLAKE)	Humic>50%, Fulvic>20%, K ₂ O>10%, Water Soluble 100%, pH9-10	1-2MM SHINY FLAKE
HUWIN 100 (FINE POWDER)	Humic>50%, Fulvic>20%, K ₂ O>10%, Water Soluble 100%, pH9-10	100 MESH FINE POWDER
HUWIN 99 (FLAKE)	Humic>65%, Fulvic>5%, K ₂ O>10%, Water Soluble>99%, pH9-10	2-4MM SHINY FLAKE
HUWIN 99 (GRANULE)	Humic>65%, Fulvic>5%, K ₂ O>10%, Water Soluble>99%, PH 8-9	2-4MM SHINY FLAKE
HUWIN 98 (FLAKE)	Humic>60%, Fulvic>5%, K ₂ O>10%, Water Soluble>98%, pH9-10	2-4MM SHINY FLAKE
HUWIN 95 (FLAKE)	Humic>50%, Fulvic>5%, K ₂ O>10%, Water Soluble>95%, pH9-10	2-4MM SHINY FLAK
SEAWEED 100 (FLAKE)	Alginic>18%, Nitrogen>2%, K ₂ O>18%, Organic Matter >30%, Water Soluble 100%, PH 8-9	2-4MM SHINY FLAK
SEAWEED 100 (BLACK MICRO GRANULE)	Alginic+ polysaccharides>30%, Nitrogen>3%, K ₂ O>18%, Organic Matter >30%, Water Soluble 100%, pH8-9	1MM MICRO GRANULE
SEAWEED 100 (GREEN MICRO GRANULE)	Alginic+ polysaccharides>40%, Nitrogen>3%, k ₂ O>18%, Organic Matter > 30%, Water Soluble 100%, pH8-9	1MM MICRO GRANULE
SEAWEED 1881 (ENZYME POWDER)	Alginic acid >20%, Polysaccharides>16%, Water Soluble 100%, pH5-8	100 MESH FINE POWDER
SEAWEED 1881 (ENZYME LIQUID)	Alginic acid >2%, Polysaccharides>1.6%, Water Soluble 100%, pH5-8	DENSITY : 1.10
CHITOSAN OLIGOSACCHARIDE (POWDER)	Chito oligosaccharide>90%, Organic Matter>50%, Water Soluble100%, pH4-5	100 MESH FINE POWDER
FISH PROTEIN PEPTIDE (POWDER)	Chito oligosaccharide>90%, Organic Matter>50%, Water Soluble100%, pH4-5	100 MESH FINE POWDER



Disease-Resistant & Immune Boosters

Product Name	Composition	Physical Form (W/V)
BORON SEAWEED	Boron>15%, Seaweed Extract>2%	DENSITY 1:1.37
ZINC SEAWEED	Zinc>17%, Seaweed Extract>2%	DENSITY 1:1.37
CALCIUM SEAWEED	CaO>22%, Seaweed Extract>2%	DENSITY 1:1.37
HUMIMAX	Humic>20%, Fulvic>15%, Potassium>4%	DENSITY 1:1.3
FULVIMAX	Fulvic>40%, Alginic>10%, Organic carbon>24%	DENSITY 1:1.3



Lifecycle Maintenance Program

Product Name	Composition	Physical Form (W/V)
RHIZOCARE (BACILLUS)	Subtilis +Trichoderma Bacillus >10 ⁹ CFU/g, Humic>55%, Fulvic>55%, Alginic>2%, K ₂ O>12%, Water Soluble 100%, PH 8-9	1MM MICRO GRANULE
NITRORICH 30-10-10 + TE	Total Nitrogen (N) 30%, Phosphorus Pentoxide(P ₂ O ₅) 10% Potassium Oxide (K ₂ O) 10%,Boron (B) 0.02% EDTA Iron (Fe) 0.05%,EDTA Manganese (Mn) 0.03% EDTA Zinc (Zn) 0.05%	30 MESH POWDER
UNIVITA 20-20-20 + TE	Total Nitrogen (N) 20%,Phosphorus Pentoxide(P ₂ O ₅) 20% Potassium Oxide(K ₂ O) : 20%,Boron (B) 0.02% EDTA Iron (Fe) 0.05%,EDTA Manganese (Mn) 0.03% EDTA Zinc (Zn) 0.05%	30 MESH POWDER
ROOTGEN	N>50g/L, P>80g/L, K>70g/L, Humic acid100g/L, γ-PGA 50g/L, Compound vitamin 500ppm	DENSITY 1:1.17
COLORGEN	P80g/L, K 70g/L, Organic matter 100g/L, Amino acid 60g/L, compound vitamin 500ppm, 5-ALA 2g/L, Chitooligosaccharide 2g/L	DENSITY 1:1.21
FRUITGEN 0-0-40 +TE	Potassium Oxide (K ₂ O) 40%	DENSITY 1:1.24



Lifecycle Maintenance Program

Product Name	Composition	Physical Form (W/V)
ALGAMAX	N>10%, P ₂ O ₅ >4%, K ₂ O>4%, CaO>12%, MgO>4%, Alginate Oligosaccharide >2% ,B, Fe, Mn, Zn, Cu, Mo, Ti, Se>3%	DENSITY 1:1.4
ABIORESIST	Amino acids 10%, Peptides 25%, Alginic acid 0.5%, 5LALA 1% , Organic matter 10%	DENSITY 1:1.25
NEMATICIDAL PRO	Suaeda Extract > 5% , Saponin Essence > 10% , Agropho PGA > 30% , Chito Oligosaccharide > 5% , Amino Acid Zn > 20%	DENSITY 1.1
NEMATICIDAL PLUS	Suaeda Extract > 5%, Saponin Essence > 20% Agropho PGA > 20% , Chito Oligosaccharide > 10% Amino Acid Zn > 10%, Water Soluble 100%	80 MESH POWDER
NEMATICIDAL MAX	Suaeda Extract > 10% , Saponin Essence > 50%, Humic acid > 5% , Fulvic acid > 5%, Agropho G31A > 20% , Water Soluble 100%	80 MESH POWDER



SRaw Fertilizer

Product Name	Composition	PHYSICAL FORM (W/V)
CALCIUM AMMONIUM NITRATE	Total Nitrogen (N): 15.5% ,Nitrate Nitrogen: 14.4% ,Ammonium Nitrogen: 1.1% ,Calcium (Ca) Soluble: 18.5% ,Calcium Oxide (CaO): 26% , Water Insoluble: 0.1%	1-2 MM WHITE CRYSTAL
POTASSIUM NITRATE	Nitrate Nitrogen (N): 13.5%,Potassium (K) Soluble: 0% Potassium Oxide (K ₂ O): 46% ,Water Insoluble: 0.01% Moisture: 0.2%	1-2 MM WHITE CRYSTAL
MKP	NPK 0-52-34	1-2 MM WHITE CRYSTAL
MKPI	NPK 0-58-38	1-2 MM WHITE CRYSTAL
Magnesium Sulfate Monohydrate	Magnesium: 17% Sulphur: 26% Water Insoluble: 0.05% Purity: 99.0%	1-2 MM WHITE CRYSTAL



Biostimu & Anti-stress

Product Name	Composition	Physical Form (W / V)
FISH PROTEIN PEPTIDE (POWDER)	Oligopeptides >65%, N>15%, Amino Acid >80%, Organic matter > 60%, Water Soluble 100%,pH5-6	100 MESH FINE POWDER
AMINOPOLY 90 (POWDER)	Amino>90%, Nitrogen>14%, Protein>85%, Water Soluble 100%, pH4-5	100 MESH FINE POWDER
AMINOPOLY 80 (POWDER)	Amino>80%, Nitrogen>10%, Water Soluble 100%, pH4-5	100 MESH FINE POWDER
AMINOPOLY 50 (POWDER)	Amino>50%, Nitrogen>5%, Water Soluble>99%, pH4-5	100 MESH FINE POWDER
BIO-FULVATE 50 (POWDER)	Fulvic>50%, NPK>10%, Water Soluble 100%, pH5-6	100 MESH FINE POWDER



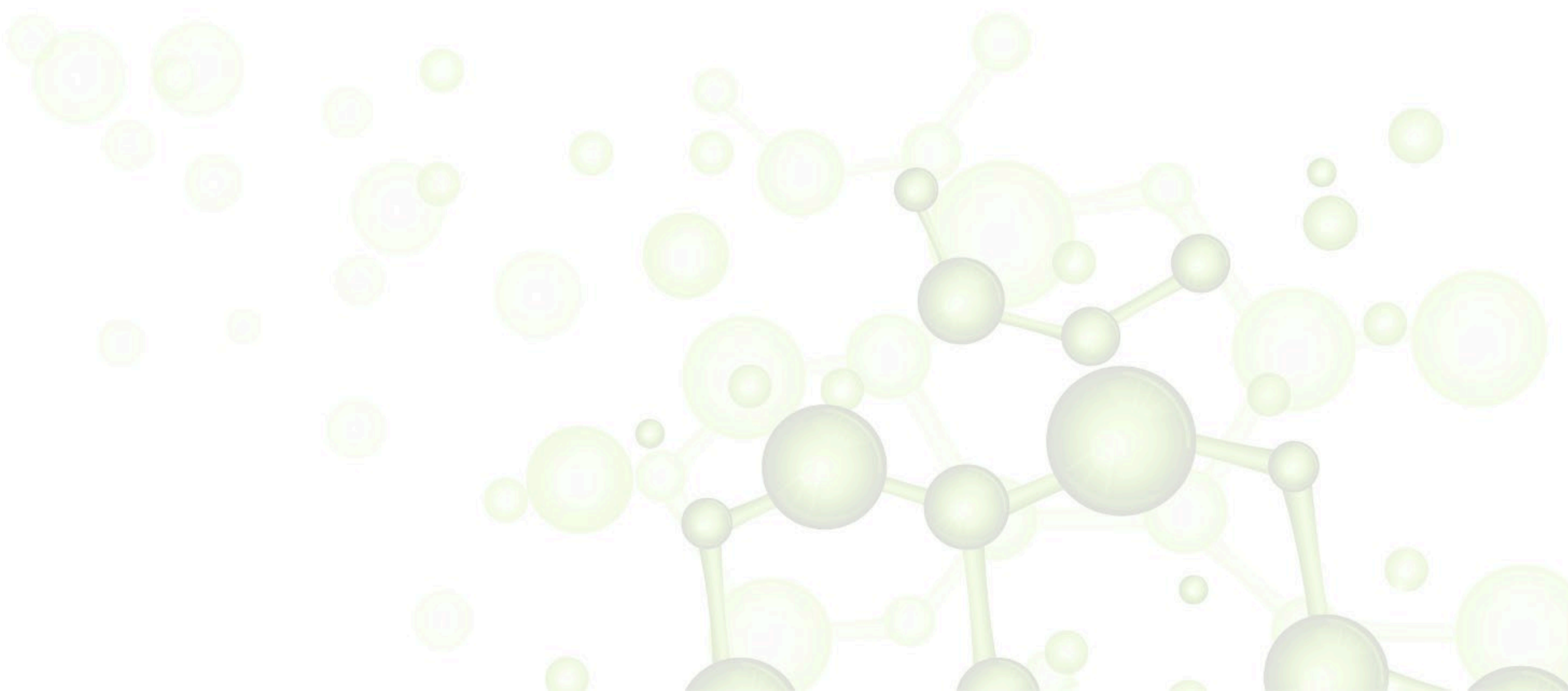
Disease-Resistant & Immune Boosters

Product Name	Composition	Physical Form (W / V)
BIOSTIMU	Amino>45%, Fulvic>5%, Micro N>5%,Others>40%	DENSITY 1:1.3
DOCTOR PLANT	N>60g/L, P>20g/L, K ₂ O>80g/L, Oligosaccharides>35g/L, Amino>80g/L, Organic matter>150g/L, Glucose>50g/L, Boron, Iron, Zinc ,Mg>25g/L	DENSITY 1:1.3
COPPER MAN	Amino>8%, Copper (Cu)>3.6%, Zinc>1%, N>1%, Sulfur>1%	DENSITY 1:1.37
ZINC AMINO SUSP .	Zinc>700 g/L, Amino acid>20 g/L,Suspension Liquid	DENSITY 1:1.79
CALCIUM AMINO SUSP.	CaO>700 g/L, Amino acid>20 g/L,Suspension Liquid	DENSITY 1:1.67
POTASSIUM AMINO SUSP.	K ₂ O>500 g/L, Amino acid>20 g/L,Suspension Liquid	DENSITY 1:1.47
CALCIUM POWER	Calcium>150 g/L, Transperant Liquid, no react with P & S	DENSITY 1:1.42
BORON BALANCE	Boron>150 g/L, Transperant Liquid	DENSITY 1:1.35



SRaw Fertilizer

Product Name	Composition	Physical Form (W / V)
Magnesium Sulfate Heptahydrate	Magnesium: 16% Sulphur: 12% Water Insoluble: 0.05% Purity: 99.0%	1-2 MM WHITE CRYSTAL
SODIUM HUMATE (SHINY FLAKE)	Humic>50%, Water Soluble>98%, pH 8-9	2-4MM SHINY FLAKE
EDDHA Fe 6% (Ortho 4.8)	EDDHA Ferrous (Fe) 6.12%, pH 8.69	200 MESH BROWN RED POWDER
EDTA Fe	EDTA Ferrous (Fe) 13.3%, pH 4.93	200 MESH BROWN POWDER
EDTA Zn	EDTA Zinc (Zn) 14.7%, pH 6.64	200 MESH WHITE POWDER
EDTA Mn	EDTA Manganese (Mn) 12.7%, pH 6.57	200 MESH PINK POWDER
EDTA Cu	EDTA Copper (Cu) 14.7%, pH 6.54	200 MESH BLUE POWDER
EDTA Mg	EDTA Magnesium (Mg) 6.0%, pH 6.67	200 MESH WHITE POWDER
EDTA Ca	EDTA Calcium (Ca) 9.6%, pH 6.96	200 MESH WHITE POWDER
EDTA POWER	Cu:1.5% Fe:4.0% Mg:5.4% Mn:4.0% Zn:1.5% B:0.5% Mo:0.1% Co:0.05% PH :5.0-7.0)	200 MESH GREEN POWDER



PROTEINIC (MICROBIAL)

Make ideal nutrients for precision agriculture



COMPOSITION	COMPOSITION
Bacillus:	>5 ⁹ CFU/g
Si+Mg+Ca:	>6%
Protein:	>25%
Organic Carbon:	>45%
pH:	5-6
Physical Form:	2-4MM BALL



Product Overview

Proteinic are spherical organic fertilizer products rich in protein, Enriched with salt-tolerant live microbes (Bacillus > 5⁹ CFU/g) and anti-salt bacterial packets, it effectively improves the saline root environment of crops, protects roots, and enhances nutrient absorption capacity. Formulated with high-content Organic Carbon (> 45%) and Protein (> 25%), it supplements soil organic matter, relieves compaction, boosts water and fertilizer retention, and enhances soil fertility. The product has a stable pH of 5-6, which helps regulate soil acid-base balance.



Ihumate®

KEY BENEFITS

- Salt tolerance & salt resistance: High-activity Bacillus efficiently inhibits harmful microbes in saline soil, improves soil structure by promoting aggregate formation, enhancing looseness, aeration and water permeability,
- Enhances soil micro ecology: Supplements beneficial soil microbes, alleviates continuous cropping obstacles and soil-borne diseases.
- Comprehensive nutrient supplement: Rich in Organic Carbon, Protein and essential elements (Si + Mg + Ca > 6%), it enriches medium and trace elements, optimizes soil nutrient balance, and meets the multi-dimensional nutrient needs of crops.
- Boosts nutrient utilization: Improves the efficiency of crop nutrient absorption and utilization, enhancing product quality.

DOSAGE & APPLICATION:

- 1,500kg-3,000kg/Hectare for cash crops and field crops. As base fertilizer or early topdressing.
- Compatibility : Proteinic mixes well with NPK, bio-fertilizers, most pesticides. Avoid strong acids/alkalis, high-concentration heavy metal salts.
- Storage & Precautions Under dry & clean conditions, Products can remain stable for 5 years at least.





SALT DELETE

Make ideal nutrients for precision agriculture

COMPOSITION	COMPOSITION
Amino acid:	80g/L
NPK:	100g/L
Organic Matter:	200g/L
Fish Protein Peptide	20g/L
Ca 100g/L +Ectoin	
Physical Form:	DENSITY : 1.15

KEY BENEFITS:

- Comprehensive Nutrition & Salt Reduction:** Balanced amino acids, NPK, calcium and organic matter meet multi-stage crop needs, boost root, stem and leaf growth. Amino acids and organic matter chelate excess soil salts, reducing salt stress on crops and laying a foundation for high yield in saline-alkali land.
- Salt Tolerance & Stress Resistance Enhancement:** Ectoin and fish protein peptide strengthen drought, cold, disease resistance and salt tolerance, effectively alleviating salt damage, maintaining stable crop growth in saline-alkali and other adverse environments.
- Improved Absorption:** Amino acids act as chelating agents, promoting calcium absorption, reducing nutrient loss and improving utilization efficiency.
- Soil Improvement & Quality Boost:** Reduces soil salt content, optimizes saline-alkali soil structure, enriches organic matter, promotes photosynthesis, and improves crop quality and yield in saline environments.

DOSAGE:

- Foliar Spray:** Dilute 1:800-1200, apply every 7-10 days, 2-3 times per growth stage.
- Drench:** Dilute 1:500-800, 200-300L/ha every 10-15 days, adjust by crop status.
- Drip Irrigation:** Dilute 1:1000-1500, 150-250L/ha, suitable for large-scale planting.



Product Overview

High-concentration multi-nutrient liquid fertilizer: Amino Acid 80g/L, NPK 100g/L, Organic Matter 200g/L, Fish Protein Peptide 20g/L, Ca 100g/L, Ectoin. Merges organic/inorganic/bioactives; fast-absorbing, high-utilization, for all crops' full growth.

Compatibility

Greemic mixes well with NPK, bio-fertilizers, most pesticides. Avoid strong acids/alkalis, high-concentration heavy metal salts.

Storage & Precautions

Store cool/dry/ventilated (5-35°C); avoid sun/heat. Keep from acids/alkalis; no leakage. Keep off kids/pets; rinse if contact.



Ihumate®



SAND FIXER

Make ideal nutrients for precision agriculture



Product Overview

High-performance polymer sand fixer: organic matter >100g/L (glucose), pH7 stable. Eco-friendly, adhesive, water-retentive, biodegradable. Suits deserts, sites, mines: consolidates sand, resists erosion, prevents water loss, aids vegetation restoration.

Compatibility

Compatibility: Spray: Dilute (recommended ratio), stir, high-pressure spray sand evenly. 2-3 sprays (24-48h gap) or deep fixing; apply in calm wind, avoid rain/high temp.

Storage & Precautions

Storage & Precautions: Dry, clean, cool (5-35°C), dark; stable ≥5y. Avoid acids/alkalis/oxidants. Keep from kids/pets; rinse with water.



COMPOSITION	COMPOSITION
Organic matter:	>100g/L(Glucose Source)
pH:	7
Physical Form:	DENSITY : 1.1

KEY BENEFITS

- Strong sand fixing capacity: The polymer material forms a continuous and stable film on the sand surface, effectively bonding sand particles, preventing sand drift and erosion.
- Environmentally friendly and degradable: Glucose-derived organic matter is biodegradable, no harmful residues; neutral pH (7) is friendly to the ecological environment and vegetation growth.
- Improves sandy soil quality: Supplements organic matter to sandy soil, enhances soil water retention and fertilizer retention capacity, and creates favorable conditions for vegetation restoration.
- Excellent weather resistance: Resists high temperature, low temperature and ultraviolet radiation, and maintains stable sand fixing performance in harsh natural environments.

DOSAGE & APPLICATION:

- General sand control (wind erosion prevention): Dilute with water at 1:50-1:100, dosage is 200-300/L mu.
- Severe sand drift areas or key protection areas: Dilute with water at 1:30-1:50, dosage is 300-500L/mu.
- Vegetation restoration supporting: Dilute with water at 1:80-1:120, dosage is 150-250 L/mu. Adjust flexibly according to sand particle size, wind force and construction requirements.



GREEMIC (MICROBIAL)

Make ideal nutrients for precision agriculture

COMPOSITION		COMPOSITION	
Bacillus:	>10 ⁹ CFU/g	Humic Acid:	>10%
Fulvic Acid:	>5%	N:	>2%
P:	>0.5%	K:	>2%
Ca:	>3%	Mg:	>0.8%
S:	>2.5%	Organic Carbon:	>20%
pH:	5-6	Physical Form:	2-4MM BALL

KEY BENEFITS:

- 1. Salt tolerance & salt resistance: Improves soil structure by promoting aggregate formation, enhancing looseness, aeration and water permeability.
- 2. Enhances soil micro ecology: Supplements beneficial soil microbes, alleviates continuous cropping obstacles and soil-borne diseases.
- 3. Comprehensive nutrient supplement: Enriches medium and trace elements, optimizing nutrient balance in soil.
- 4. Boosts nutrient utilization: Improves the efficiency of crop nutrient absorption and utilization, enhancing product quality.

DOSAGE & APPLICATION:

- Greemic mixes well with NPK, bio-fertilizers, most pesticides. Avoid strong acids/alkalis, high-concentration heavy metal salts.
- Storage & Precautions**
Under dry & clean conditions, Products can remain stable for 5 years at least.
- Package**
Solid products are packaged in 50g-1kg OEM bag or 10kg and 25kg general bag, jumbo bag also welcomed.



Product Overview

Greemic are spherical organic fertilizer products rich in humic acid, fulvic acid, Ca+Mg+S and high organic carbon. They improve soil structure, boost nutrient absorption, and enhance crop stress resistance, suitable for all growth stages.

Compatibility

Greemic mixes well with NPK, bio-fertilizers, most pesticides. Avoid strong acids/alkalis, high-concentration heavy metal salts.

Storage & Precautions

Under dry & clean conditions, Products can remain stable for 5 years at least.



Ihumate®



SEAWEED 1881 (ENZYME POWDER)

Make ideal nutrients for precision agriculture



COMPOSITION	COMPOSITION
Alginic acid:	>20%
Polysaccharides:	>16%
Water Soluble:	100%
pH:	5-8
Physical Form:	100 MESH FINE POWDER



Product Overview

Enzymatic hydrolysis seaweed extract fertilizer: >20% alginic acid, >16% polysaccharides, full specs, boosts stress resistance, yield and quality for all crops.

Compatibility

Compatible with most water-soluble fertilizers, pesticides and growth regulators. Avoid strong acids (pH<4); conduct a small-scale test before large-area mixing.

Storage & Precautions

UStore cool dry 5-35°C; avoid sun/heat; keep acids/kids; rinse if contact.



Ihumate®

DOSAGE & APPLICATION:

- Foliar Spray: Dilute 1000-1500x, spray leaves at key stages; 2-3 times every 7-10 days; avoid heat/rain.
- Drip/Flush: Dilute 1500-2500x; 2-3kg/mu (field) or 3-5kg/mu (fruits/veggies) every 10-14 days.
- Seed Treatment: Dilute 2000-3000x; soak 6-8h or dress; boost germination/immunity.
- Fertilizer Blend: Add 3-5% to water-soluble fertilizers for enhanced efficacy.

KEY BENEFITS:

- Advanced Enzymatic Hydrolysis: Preserves natural active ingredients, improves bioavailability vs chemical hydrolysis, ensuring faster crop absorption.
- High Alginic Acid & Polysaccharides: Alginic Acid>20% + Polysaccharides>16% strengthen cell walls, activate defense systems, and amplify stress tolerance.
- Stress Resistance & Immunity: Enhances drought/cold/salinity tolerance, inhibits pathogens, and reduces environmental stress damage.
- Balanced Nutrition: 18% K₂O + 3% N + 30% organic matter, 100% water-soluble for quick, comprehensive nutrition supply.
- Yield & Quality Boost: Stimulates photosynthesis, increases sugar content and fruit firmness, extending shelf life.



AMINOPOLY 90 (POWDER)

.....
Make ideal nutrients
for precision
agriculture



Product Overview

Plant-derived amino acid fertilizer; >90% free amino, full specs, rapid nutrition, soil health, safe for organic farming, high-efficiency biostimulant for all crops.

Compatibility

Excellent compatibility with most water-soluble fertilizers, pesticides and regulators. pH4-5 adaptable; avoid strong alkalis (pH>8); conduct small-scale test before mass compounding.

Storage & Precautions

Store cool dry ventilated 5-35°C; avoid sun/heat; keep from acids/kids; rinse if contact.



Ihumate®

COMPOSITION	COMPOSITION
Amino Acid:	>90%
Nitrogen:	>14%
Protein:	>85%
Water Soluble:	100%
pH:	4-5
Physical Form:	100 MESH FINE POWDER

DOSAGE & APPLICATION:

- Foliar Spray: Dilute 1000-1500x, spray leaves at key stages; 2-3 times/7-10 days; avoid heat/rain.
- Drip/Flush: Dilute 1500-2000x; 2-3kg/mu (field) or 3-5kg/mu (fruits/veggies) every 10-14 days.
- Seed Treatment: Dilute 2000-3000x; soak 6-8h or dress; boost germination and seedling vigor.
- Fertilizer Blend: Add 3-5% to water-soluble fertilizers for synergistic efficacy.

KEY BENEFITS:

- Plant-Derived Amino Acid: >90% high-purity amino acids from natural plant sources, perfectly compatible with crop physiology. Facilitates fast absorption, activates metabolic processes, and avoids the incompatibility risk of chemical-synthetic amino acids.
- Rich Protein Content: >85% protein provides stable nutrient support, supplementing essential amino acids and enhancing crop vigor.
- Full Solubility & Efficacy: 100% water-soluble, no residue; quick absorption ensures immediate nutrient supply for crops.
- pH Adaptability: pH4-5 adaptable, compatible with diverse inputs, suitable for most cultivation scenarios.



BIO-FULVATE 50 (POWDER)

Make ideal nutrients for precision agriculture

COMPOSITION	COMPOSITION
Fulvic Acid:	>50%
NPK:	>10%
Water Soluble:	100%
pH:	5-6
Physical Form :	100 MESH FINE POWDER

DOSAGE & APPLICATION:

- Foliar Spray: Dilute 1000-1500x, spray leaves at key stages; 2-3 times/7-10 days; avoid heat/rain.
- Drip/Flush: Dilute 1500-2000x; 2-3kg/mu (field) or 3-5kg/mu (fruits/veggies) every 10-14 days.
- Seed Treatment: Dilute 2000-3000x; soak 6-8h or dress; boost germination and seedling vigor.
- Fertilizer Blend: Add 3-5% to water-soluble fertilizers for synergistic efficacy.

KEY BENEFITS:

- Plant-Derived Fulvic Acid: >50% high-purity plant-sourced fulvic acid, boosts nutrient mobilization, accelerates absorption, and enhances crop stress tolerance.
- Excellent Compatibility: Perfectly mixes with water-soluble fertilizers, pesticides and regulators, no antagonistic effects, synergizing to amplify overall efficacy.
- Balanced NPK Supply: NPK>10% provides comprehensive nutrition, supporting steady crop growth and improving yield potential.
- Full Water Solubility: 100% soluble in water, no residue, enabling flexible application via foliage, drip or flush.
- pH Adaptability: pH5-6 range fits most cultivation scenarios, optimizing soil microenvironment and nutrient availability.



Product Overview

Plant-derived fulvic acid fertilizer: >50% fulvic, >10% NPK, 100% soluble, pH5-6, natural-sourced, bioactive, compatible, efficient crop biostimulant.

Compatibility

Excellent compatibility with most water-soluble fertilizers, pesticides and regulators. pH4-5 adaptable; avoid strong alkalis (pH>8); conduct small-scale test before mass compounding.

Storage & Precautions

Store cool dry 5-35°C; avoid sun/heat; keep acids/kids; rinse if contact.



Ihumate®



CHITOSAN OLIGOSACCHARIDE (POWDER)

Make ideal nutrients for precision agriculture



COMPOSITION	COMPOSITION
Chito oligosaccharide:	>90%
Organic Matte:	>50%
Water Soluble:	100%
pH:	4-5
Physical Form:	100 MESH FINE POWDER



Product Overview

Greemic are spherical organic fertilizer products rich in humic acid, fulvic acid, Ca+Mg+S and high organic carbon. They improve soil structure, boost nutrient absorption, and enhance crop stress resistance, suitable for all growth stages.

Compatibility

Greemic mixes well with NPK, bio-fertilizers, most pesticides. Avoid strong acids/alkalis, high-concentration heavy metal salts.

Storage & Precautions

Under dry & clean conditions, Products can remain stable for 5 years at least.



Ihumate®

DOSAGE & APPLICATION:

- Foliar Spray: Dilute 800-1200x, spray leaf sides at key stages. Apply every 7-10 days (2-3 times); avoid heat/rain.
- Drip/Flush: Dilute 1500-2000x. 1-2kg/mu (field) or 2-3kg/mu (fruits/veggies) every 10-14 days.
- Seed Treatment: Dilute 2000-3000x. Soak 6-12h or dress; sow after shade-drying. Boosts germination/resistance.
- Microbial Blend: Add 2-5% to microbial fertilizers; mix well to enhance activity.

KEY BENEFITS:

- Superior Microbial Compatibility: Unmodified structure preserves natural groups, non-inhibitory to beneficial microbes. Synergizes reproduction, boosting microbial fertilizer efficacy and soil microecosystem stability.
- Powerful Rooting: Stimulates root primordia, accelerates root growth, enhances absorption. Enables robust roots in adverse soil.
- Strong Stress Resistance: Improves tolerance to drought, salinity, cold and disease. Regulates metabolism, reducing stress damage for stable yield.
- High Nutrient Use: 100% water-soluble, residue-free. Chelates soil nutrients, converting insoluble forms and reducing loss.
- Soil Improvement: Enhances structure, aeration and water-holding capacity. Mitigates salinization/compaction, enriches organic matter. Natural & Safe: No chemical modifiers, suitable for organic/green agriculture.



HUWIN 99 (FLAKE)

.....
**Make ideal nutrients
 for precision
 agriculture**

COMPOSITION	COMPOSITION
Humic Acid:	>65%
Fulvic Acid:	>5%
K ₂ O:	>10%
Water Soluble:	>99%
pH:	9-10
Physical Form:	2-4MM SHINY FLAKE

DOSAGE & APPLICATION:

- Foliar Spray:** Dilute 800-1200x, spray leaf sides at key stages. Apply every 7-10 days (2-3 times); avoid heat/rain.
- Drip/Flush:** Dilute 1500-2000x. 1-2kg/mu (field) or 2-3kg/mu (fruits/veggies) every 10-14 days.
- Seed Treatment:** Dilute 2000-3000x. Soak 6-12h or dress; sow after shade-drying. Boosts germination/resistance.
- Microbial Blend:** Add 2-5% to microbial fertilizers; mix well to enhance activity.

KEY BENEFITS:

- Ultra-High Humic Acid:** >65% content enriches soil organic matter, strengthens nutrient chelation, and outperforms conventional products.
- High Cost-Effectiveness:** High active ingredients ensure great effects with low dosage, ideal for large-scale farming.
- Powerful Rooting:** Stimulates root growth, enhances absorption, and fosters robust roots in adverse soil.
- Strong Stress Resistance:** Boosts tolerance to drought/salinity/cold/diseases, securing stable yield.



Product Overview

High-purity potassium humate: >65% humic acid, full specs, rooting/stress resistance, microbial compatibility, cost-effective organic/microbial blend additive

Compatibility

Compatible with most water-soluble fertilizers, pesticides and growth regulators. Avoid strong acids (pH<4); conduct a small-scale test before large-area mixing

Storage & Precautions

Store cool dry ventilated 5-35°C; avoid sun/heat; keep safe; rinse if contact



Ihumate[®]

HUWIN 100 (SHINY FLAKE)

.....
**Make ideal nutrients
 for precision
 agriculture**

COMPOSITION	COMPOSITION
Humic Acid:	>50%
Fulvic Acid:	>20%
K ₂ O:	>10%
Water Soluble:	100%
pH:	9-10
Physical Form:	1-2MM SHINY FLAKE

DOSAGE & APPLICATION:

- Foliar Spray:** Dilute 800-1200x, spray leaf sides at key stages. Apply every 7-10 days (2-3 times); avoid heat/rain.
- Drip/Flush:** Dilute 1500-2000x. 1-2kg/mu (field) or 2-3kg/mu (fruits/veggies) every 10-14 days.
- Seed Treatment:** Dilute 2000-3000x. Soak 6-12h or dress; sow after shade-drying. Boosts germination/resistance.
- Microbial Blend:** Add 2-5% to microbial fertilizers; mix well to enhance activity.

KEY BENEFITS:

- Superior Microbial Compatibility:** Unmodified structure preserves natural groups, non-inhibitory to beneficial microbes. Synergizes reproduction, boosting microbial fertilizer efficacy and soil microecosystem stability.
- Powerful Rooting:** Stimulates root primordia, accelerates root growth, enhances absorption. Enables robust roots in adverse soil.
- Strong Stress Resistance:** Improves tolerance to drought, salinity, cold and disease. Regulates metabolism, reducing stress damage for stable yield.
- High Nutrient Use:** 100% water-soluble, residue-free. Chelates soil nutrients, converting insoluble forms and reducing loss.
- Soil Improvement:** Enhances structure, aeration and water-holding capacity. Mitigates salinization/compaction, enriches organic matter. **Natural & Safe:** No chemical modifiers, suitable for organic/green agriculture.



Product Overview

Non-Modified Potassium Fulvate: natural high-purity organic, unmodified, key specs met, excels in rooting/stress resistance/compatibility, ideal additive for organic fertilizers/biostimulants.

Compatibility

Compatible with most water-soluble fertilizers, pesticides and growth regulators. Avoid strong acids (pH<4); conduct a small-scale test before large-area mixing.

Storage & Precautions

Store cool/dry/ventilated (5-35°C); avoid sun/heat; keep off acids/oxidants/kids/pets; rinse if contact.



Ihumate[®]

SEAWEED 100 (FLAKE)

.....
Make ideal nutrients
for precision
agriculture



Product Overview

High-performance seaweed extract fertilizer: >18% alginic acid, full specs, boosts stress resistance, immunity, yield, cost-efficient for all crops

Compatibility

Compatible with most water-soluble fertilizers, pesticides and growth regulators. Avoid strong acids (pH<4); conduct a small-scale test before large-area mixing.

Storage & Precautions

Store cool dry 5-35°C; avoid sun/heat; keep from acids/kids; rinse if contact



Ihumate®

COMPOSITION	COMPOSITION
Alginic Acid:	>18%
Nitrogen:	>2%
K ₂ O:	>18%
Organic Matter:	>30%
Water Soluble:	100%
pH:	8-9
Physical Form:	2-4MM SHINY FLAKE

DOSAGE & APPLICATION:

- Foliar Spray: Dilute 800-1500x; spray leaves at key stages; apply every 7-10 days (2-3 times); avoid heat/rain
- Drip/Flush: Dilute 1500-2000x; 2-3kg/mu (field) or 3-5kg/mu (fruits/veggies) every 10-14 days.
- Seed Treatment: Dilute 2000-3000x; soak 6-8h or dress, sow after shade-drying; boosts germination/immunity.
- Fertilizer Blend: Add 3-5% to water-soluble fertilizers; mix well for better efficacy.

KEY BENEFITS:

- Ultra-High Alginic Acid: >18% content activates crop defense systems, strengthens cell walls, and boosts stress tolerance vs conventional products.
- Stress Resistance & Immunity: Improves tolerance to drought/cold/salinity/diseases, reducing pathogen infection and stress damage.
- Balanced Nutrition: 18% K₂O + 2% N + 30% organic matter, 100% water-soluble for rapid absorption and balanced growth.
- Yield & Quality Boost: Stimulates photosynthesis, increases sugar content and fruit firmness, extending shelf life and yield.
- Soil Health: Enriches organic matter, improves soil structure, and fosters beneficial microbes for sustainable farming.



SEAWEED 100(GREEN MICRO GRANULE)

Make ideal nutrients for precision agriculture

COMPOSITION	COMPOSITION
Alginic Acid+ polysaccharides:	>40%
Nitrogen:	>3%
K ₂ O:	>18%
Organic Matter:	>30%
Water Soluble:	100%
pH:	8-9
Physical Form:	1MM MICRO GRANULE

DOSAGE & APPLICATION:

- Foliar Spray: Dilute 1000-1500x, spray leaves at key stages; 2-3 times every 7-10 days; avoid heat/rain.
- Drip/Flush: Dilute 1500-2500x; 2-3kg/mu (field) or 3-5kg/mu (fruits/veggies) every 10-14 days.
- Seed Treatment: Dilute 2000-3000x; soak 6-8h or dress; boost germination/immunity.
- Fertilizer Blend: Add 3-5% to water-soluble fertilizers for enhanced efficacy.

KEY BENEFITS:

- High Alginic Acid & Polysaccharides: >40% total content strengthens cell walls, activates defense systems, and amplifies stress tolerance.
- Stress Resistance & Immunity: Improves drought/cold/salinity tolerance, inhibits pathogens, and reduces stress damage.
- Added Trace Elements: Specially incorporated essential trace elements (Fe, Zn, Mn, B, etc.) complement nutrition, promoting balanced crop growth and metabolic activity.
- Balanced Nutrition: 18% K₂O + 3% N + 30% organic matter, 100% water-soluble for quick absorption.
- Yield & Quality Boost: Stimulates photosynthesis, increases sugar content and fruit firmness, extending shelf life.
- Soil Improvement: Enriches organic matter, optimizes soil structure, and fosters beneficial microbes.



Product Overview

Premium seaweed extract fertilizer: >40% alginic+polysaccharides, trace elements, full specs, boosts stress resistance, yield and quality efficiently for all crops.

Compatibility

Compatible with most water-soluble fertilizers, pesticides and growth regulators. Avoid strong acids (pH<4); conduct a small-scale test before large-area mixing.

Storage & Precautions

Store cool dry 5-35°C; avoid sun/heat; keep from acids/kids; rinse if contact



Ihumate®

HUWIN 99 (GRANULE)

.....
**Make ideal nutrients
 for precision
 agriculture**



Product Overview

High-purity potassium humate: >65% humic acid, >5% fulvic acid, >10% K₂O, 99% soluble, pH9-10, rooting, stress resistance, cost-effective organic fertilizer additive.

Compatibility

Compatible with most water-soluble fertilizers, pesticides and growth regulators. Avoid strong acids (pH<4); conduct a small-scale test before large-area mixing.

Storage & Precautions

Store 5-35°C cool dry ventilated; avoid sun/heat; keep from acids/oxidants/kids/pets; rinse if contact



Ihumate[®]

COMPOSITION	COMPOSITION
Humic Acid:	>65%
Fulvic Acid:	>5%
K ₂ O:	>10%
Water Soluble:	>99%
pH:	9-10
Physical Form:	2-4MM SHINY GRANULE

DOSAGE & APPLICATION:

- Foliar Spray: Dilute 800-1200x, spray leaf sides at key stages. Apply every 7-10 days (2-3 times); avoid heat/rain.
- Drip/Flush: Dilute 1500-2000x. 1-2kg/mu (field) or 2-3kg/mu (fruits/veggies) every 10-14 days.
- Seed Treatment: Dilute 2000-3000x. Soak 6-12h or dress; sow after shade-drying. Boosts germination/resistance.
- Microbial Blend: Add 2-5% to microbial fertilizers; mix well to enhance activity.

KEY BENEFITS:

- Ultra-High Humic Acid: >65% content enriches soil organic matter, strengthens nutrient chelation, and outperforms conventional products.
- High Cost-Effectiveness: High active ingredients ensure great effects with low dosage, ideal for large-scale farming.
- Powerful Rooting: Stimulates root growth, enhances absorption, and fosters robust roots in adverse soil.
- Strong Stress Resistance: Boosts tolerance to drought/salinity/cold/diseases, securing stable yield.





EDTA POWER

Make ideal nutrients for precision agriculture



Product Overview

EDTA chelated compound micronutrient fertilizer (balanced formula) features high bioavailability, suits acidic-neutral soils, promotes crop growth and enhances stress resistance

Compatibility

Mixes well with most water-soluble fertilizers, pesticides and growth regulators. Avoid mixing with strong acids/alkalis; conduct a small-scale test before large-scale use.

Storage & Precautions

Store cool dry ventilated 5-35°C; avoid sun/heat; keep acids kids; rinse contact.



Ihumate®



COMPOSITION		COMPOSITION	
Cu:	1.5%	Fe:	4.0%
Mg:	5.4%	Mn:	4.0%
Zn:	1.5%	B:	0.5%
Mo:	0.1%	Co:	0.05%
pH:	5-7	Physical Form :	200 MESH GREEN POWDER

DOSAGE & APPLICATION:

- Foliar Spray: Dilute 1000-2000x, spray evenly on leaf surfaces (front and back); 2-3 times every 7-10 days, apply in cool mornings or evenings to avoid evaporation.
- Soil Application: 200-300g per mu, mix with base fertilizer or spread evenly around crop roots, then water thoroughly to promote absorption.
- Drip Irrigation: Dilute 1500-2500x, inject into drip irrigation system; apply every 10-14 days, continuous 2-3 times for optimal zinc supplementation.

KEY BENEFITS:

- EDTA Chelation Advantage: Prevents soil fixation and element antagonism, greatly improving nutrient absorption efficiency.
- Comprehensive Nutrition: Contains Fe, Mg, Mn as key elements and other trace elements, satisfying crop micronutrient needs for photosynthesis and vitality.
- Broad pH Adaptability: Stable in pH5.0-7.0 soils, suitable for most cultivation scenarios without soil acidity adjustment.
- Strong Compatibility: Mixes well with water-soluble fertilizers, pesticides and regulators for flexible application.



EDDHA FE 6% (ORTHO 4.8)

.....
Make ideal nutrients
for precision
agriculture



Product Overview

Greemic are spherical organic fertilizer products rich in humic acid, fulvic acid, Ca+Mg+S and high organic carbon. They improve soil structure, boost nutrient absorption, and enhance crop stress resistance, suitable for all growth stages.

Compatibility

Greemic mixes well with NPK, bio-fertilizers, most pesticides. Avoid strong acids/alkalis, high-concentration heavy metal salts.

Storage & Precautions

Under dry & clean conditions, Products can remain stable for 5 years at least.



Ihumate®

COMPOSITION	COMPOSITION
EDDHA Ferrous (Fe):	6.12%
pH:	8.69
Physical Form :	200 MESH BROWN RED POWDER

DOSAGE & APPLICATION:

- Foliar Spray: Dilute 1000-1500x, spray leaves at key stages; 2-3 times/7-10 days; avoid heat/rain.
- Drip/Flush: Dilute 1500-2000x; 2-3kg/mu (field) or 3-5kg/mu (fruits/veggies) every 10-14 days.
- Seed Treatment: Dilute 2000-3000x; soak 6-8h or dress; boost germination and seedling vigor.
- Fertilizer Blend: Add 3-5% to water-soluble fertilizers for synergistic efficacy.

KEY BENEFITS:

- Plant-Derived Fulvic Acid: >50% high-purity plant-sourced fulvic acid, boosts nutrient mobilization, accelerates absorption, and enhances crop stress tolerance.
- Excellent Compatibility: Perfectly mixes with water-soluble fertilizers, pesticides and regulators, no antagonistic effects, synergizing to amplify overall efficacy.
- Balanced NPK Supply: NPK>10% provides comprehensive nutrition, supporting steady crop growth and improving yield potential.
- Full Water Solubility: 100% soluble in water, no residue, enabling flexible application via foliage, drip or flush.
- pH Adaptability: pH5-6 range fits most cultivation scenarios, optimizing soil microenvironment and nutrient availability.



CALCIUM AMMONIUM NITRATE

Make ideal nutrients for precision agriculture

COMPOSITION	COMPOSITION
Total Nitrogen (N):	15.5%
Nitrate Nitrogen:	14.4%
Ammonium Nitrogen:	1.1%
Calcium (Ca) Soluble:	18.5%
Calcium Oxide (CaO):	26%
Water Insoluble:	0.1%
Physical Form :	1-2 mm white crystal

DOSAGE & APPLICATION:

- Drip Irrigation/Soil Flushing:** Dilute 500-800x (liquid form) or apply 10-15kg per mu (granular form), flush into root zones. Apply every 7-10 days for 2-3 consecutive times, suitable for growth and fruiting stages.
- Foliar Spray:** Dilute 800-1000x (liquid form), spray evenly on leaf surfaces and young fruits. Apply 2-3 times at 7-10 day intervals, ideal for fruit expansion stage to prevent cracking.
- Base Fertilizer/Top Dressing:** Apply 20-30kg per mu (granular form) as base fertilizer before planting, or 15-20kg per mu as top dressing during growth stage, mix with soil evenly to avoid direct contact with roots.

KEY BENEFITS:

- Dual Nitrogen Source Synergy:** 7.75% nitrate nitrogen (quick-acting) is directly absorbed by crops to boost immediate growth, while 7.75% ammoniacal nitrogen (slow-release) provides sustained nutrition, avoiding nitrogen loss and ensuring balanced growth throughout the stage.
- High Calcium Supplement:** 26% CaO effectively prevents calcium deficiency symptoms (blossom-end rot, fruit cracking, leaf tip burn), strengthens cell walls, improves fruit firmness and storage resistance, and promotes root system development and nutrient absorption.
- Soil Improvement Efficacy:** Neutralizes acidic soil, improves soil buffering capacity and aggregate structure, activates beneficial microorganisms, and reduces nutrient leaching, creating a favorable growth environment for crop roots.
- Safe and efficient application:** low hygroscopicity, no caking, and not easy to burn seedlings even at appropriate doses (no phytotoxicity); the water-soluble form ensures no residue, suitable for drip irrigation, foliar spraying and soil application, and adapts to various planting patterns.



Product Overview

Greemic are spherical organic fertilizer products rich in humic acid, fulvic acid, Ca+Mg+S and high organic carbon. They improve soil structure, boost nutrient absorption, and enhance crop stress resistance, suitable for all growth stages.

Compatibility

Greemic mixes well with NPK, bio-fertilizers, most pesticides. Avoid strong acids/alkalis, high-concentration heavy metal salts.

Storage & Precautions

Under dry & clean conditions, Products can remain stable for 5 years at least.



Ihumate

RHIZOCARE (Bacillus)

Make ideal nutrients
for precision
agriculture



Function Introduction

RHIZOCARE microbial powder fertilizer: Bacillus +Trichoderma>10⁹CFU/g, humic/fulvic acid>55%, water-soluble, activates soil, boosts roots, suits all crops.

Compatibility

Compatible with fertilizers, regulators; avoid bactericides, acids, metals; dissolve first, test small.

Storage & Precautions

Store cool dry ventilated 5-35°C; avoid sun/heat; keep acids oxidants; rinse if contact.



Ihumate®

COMPOSITION	COMPOSITION
Subtilis +Trichoderma Bacillus:	>10 ⁹ CFU/g
Humic Acid:	>55%
Fulvic Acid:	>55%
Alginic Acid:	>2%
K ₂ O:	>12%
Water Soluble:	100%
pH:	8-9
Physical Form:	1MM MICRO GRANULE

DOSAGE & APPLICATION:

- Foliar Spray:** First dissolve the powder completely in water, then dilute to 1500-2000x and spray evenly on leaf surfaces. Apply 2-3 times at 7-10 day intervals, preferably in cool mornings or evenings—avoid high temperature to protect bacterial activity.
- Drip Irrigation:** Fully dissolve the powder in water first, then dilute to 2000-3000x and inject into the drip system. Apply every 10-14 days for 2-3 consecutive times, suitable for all growth stages, especially seedling and root development stages.
- Root Drenching:** Dissolve the powder thoroughly in water, dilute to 2500-3500x, and drench around crop roots. Use 300-500mL per mu each time, effective for promoting root growth and preventing root diseases in degraded soils.

KEY BENEFITS:

- High-Efficiency Beneficial Bacteria:** Total Bacillus Subtilis + Trichoderma Bacillus >10⁹ CFU/g inhibits harmful pathogens, promotes beneficial microbial reproduction, and reduces root diseases to protect root system health.
- Dual High Humic-Fulvic Acid:** Humic Acid>55% + Fulvic Acid>55% improves soil structure, enhances water-fertilizer retention, boosts nutrient mobilization, and synergizes with bacteria to promote root absorption.
- Comprehensive Nutrition Supply:** K₂O>12% supports nutrient transport and stress resistance, while Alginic Acid>2% strengthens cell structure, forming a multi-dimensional nutrition protection system.
- Excellent Physical Properties:** 100% water-soluble powder dissolves quickly without caking, leaving no residue or clogging equipment; pH 8-9 adapts to alkaline soil environments, maintaining stability of beneficial bacteria and nutrients in diverse cultivation scenarios.
- Synergistic Root Promotion:** Beneficial bacteria, humic-fulvic acid and potassium collaborate to stimulate root growth, enhance root absorption capacity, and lay a solid foundation for crop growth.



UNIVITA 20-20-20+TE

Make ideal nutrients for precision agriculture

COMPOSITION		COMPOSITION	
Total Nitrogen (N):	20%	Phosphorus Pentoxide(P ₂ O ₅):	20%
Potassium Oxide(K ₂ O):	20%	Boron (B):	0.02%
EDTA Iron (Fe):	0.05%	EDTA Manganese (Mn):	0.03%
EDTA Zinc (Zn):	0.05%	Physical Form:	30 MESH POWDER

DOSAGE & APPLICATION:

- Foliar Spray:** Dissolve completely in water, dilute to 800-1200x, spray evenly on leaf surfaces. Apply 2-3 times at 7-10 day intervals, in cool mornings or evenings to avoid high temperature evaporation.
- Drip Irrigation:** Fully dissolve in water, dilute to 1000-1500x, inject into the drip system. Apply every 7-10 days for 2-3 consecutive times, suitable for all growth stages, especially flowering and fruiting periods.
- Soil Flushing:** Dissolve thoroughly in water, dilute to 1500-2000x, flush into soil around roots. Use 500-800mL per mu each time, effective for balanced nutrient supplementation and supporting continuous crop growth.

KEY BENEFITS:

- Balanced NPK Supply:** 20-20-20 equal-proportion NPK provides comprehensive, balanced nutrition, supporting both vegetative growth (leaves, stems) and reproductive growth (flowering, fruiting), avoiding nutrient imbalance and promoting holistic crop development.
- Synergistic Nutrient Effect:** Nitrogen boosts photosynthesis, phosphorus strengthens root systems and flower formation, potassium enhances fruit quality and stress resistance—working together to optimize crop yield and quality at every growth stage.
- EDTA Chelated Trace Elements:** EDTA Fe, Mn, Zn and B ensure high bioavailability, preventing micronutrient deficiency, boosting enzyme activity and improving overall nutrient utilization efficiency.
- 100% Water-Soluble:** Rapidly dissolves without residue, suitable for all irrigation and spray systems, avoiding equipment clogging and ensuring uniform nutrient distribution to every crop.
- All-Stage Applicability:** Adapts to all growth stages of various crops, from seedling establishment and vegetative growth to flowering and fruiting, making it a versatile choice for large-scale agriculture and family farming.



Function Introduction

UNIVITA 20-20-20+TE balanced fertilizer: 20% N/P₂O₅/K₂O + chelated TE, 100% soluble, ensures balanced growth for fruits, vegetables, grains, cash crops.

Compatibility

Compatible with fertilizers, regulators; avoid bactericides, acids, metals; dissolve first, test small.

Storage & Precautions

Store cool dry ventilated 5-35°C; avoid sun/heat; keep acids kids; rinse if contact.



Ihumate®

NEMATICIDAL MAX

Make ideal nutrients for precision agriculture

COMPOSITION	COMPOSITION
Suaeda Extract	>10%
Saponin Essence	>50%
Humic acid	>5%
Fulvic acid	>5%
Agropha G31A	>20%
Water Soluble	100%
Physical Form:	80 MESH POWDER

DOSAGE & APPLICATION:

- Root Drenching:** Dilute 500-800x, drench evenly around crop root zones. Apply 2-3 times at 10-14 day intervals, ideal for nematode occurrence period and post-damage recovery.
- Drip Irrigation:** Dilute 800-1000x, inject into the drip system. Apply every 10-14 days for 2-3 consecutive times, suitable for large-area nematode prevention and control in greenhouse and open fields.
- Soil Treatment:** Dilute 300-500x, mix with soil before planting or transplanting. Use 1000-1500ml per mu, effective for nematode prevention in nursery beds and newly cultivated fields.

KEY BENEFITS:

- Ultra-High Saponin Efficacy:** 60% natural plant-derived saponin strongly disrupts nematode cell membranes, achieving rapid mortality of juvenile and adult nematodes, and effectively inhibiting egg hatching, with enhanced targeted control and longer-lasting effect compared to conventional formulations.
- Fulvic Acid Synergy:** 35% fulvic acid boosts solubility and soil penetration of saponin, activates beneficial soil microorganisms to suppress nematode proliferation, improves soil aggregate structure, and supplements organic nutrition to coordinate root growth.
- IBA Root Regeneration:** 4% IBA (a natural plant growth regulator) promotes root cell division and elongation, accelerates the repair of root systems damaged by nematodes, enhances root anchoring and nutrient absorption capacity, and improves crop survival rate and stress resistance.
- Manitol Enhancement:** 1% manitol maintains soil moisture, further improves the bioavailability of saponin and fulvic acid, relieves root stress caused by nematode infestation, and speeds up crop rejuvenation.
- Bio-Safe & Efficient:** Composed of natural and plant-derived ingredients, it is non-toxic to beneficial organisms, safe for crops and the environment, suitable for green and organic farming; liquid form ensures direct delivery to root zones with no residue accumulation.



Function Introduction

NEMATICIDAL PLUS high-potency bio-nematicidal liquid: 60% saponin, 35% fulvic acid, 4% IBA, kills nematodes, promotes roots, boosts soil for fruits, vegetables, flowers, cash crops.

Compatibility

Compatible with bio/organic fertilizers, regulators; avoid acids, alkalis, nematicides, copper; dissolve first, test small.

Storage & Precautions

Store cool dry ventilated 5-35°C; avoid sun/heat; keep acids kids; rinse if contact.



Ihumate®

NEMATICIDAL PRO

Make ideal nutrients for precision agriculture

COMPOSITION	COMPOSITION
Suaeda Extract	>5%
Saponin Essence	>10%
Agropha PGA	>30%
Chito Oligosaccharide	>5%
Amino Acid Zn	>20%
Physical Form:	DENSITY 1.1

DOSAGE & APPLICATION:

- Root Drenching:** Dilute 500-800x, drench evenly around crop root zones. Apply 2-3 times at 10-14 day intervals, ideal for nematode occurrence period and post-damage recovery.
- Drip Irrigation:** Dilute 800-1000x, inject into the drip system. Apply every 10-14 days for 2-3 consecutive times, suitable for large-area nematode prevention and control in greenhouse and open fields.
- Soil Treatment:** Dilute 300-500x, mix with soil before planting or transplanting. Use 1000-1500ml per mu, effective for nematode prevention in nursery beds and newly cultivated fields.

KEY BENEFITS:

- High Saponin Efficacy:** 30% saponin (natural plant-derived) disrupts nematode cell membranes, induces mortality of juvenile and adult nematodes, and inhibits egg hatching, achieving targeted nematode control without environmental pollution.
- Chitosan Synergy:** 5% chitosan strengthens crop root cell walls, forms a protective barrier against nematode invasion, and activates soil beneficial microorganisms to suppress nematode proliferation, while promoting root recovery.
- Manitol Boost:** 1% manitol enhances moisture retention in soil, improves solubility and penetration of saponin and chitosan, and relieves root stress caused by nematode damage, accelerating plant rejuvenation.
- Bio-Based Safety:** Composed of natural ingredients, it is non-toxic to beneficial organisms, safe for crops and the environment, and suitable for green and organic farming systems.
- Liquid Penetration:** Rapidly dissolves and penetrates soil layers, directly reaches root zones where nematodes gather, fast-acting and long-lasting, avoiding residue accumulation in crops.



Function Introduction

NEMATICIDAL PRO bio-nematicidal liquid: 30% saponin, 5% chitosan, 1% manitol, inhibits nematodes, protects roots, improves soil for fruits, vegetables, flowers, cash crops.

Compatibility

Compatible with bio/organic fertilizers, regulators; avoid acids, alkalis, nematicides, copper; dissolve first, test small.

Storage & Precautions

Store cool dry ventilated 5-35°C; avoid sun/heat; keep acids kids; rinse if contact.



Ihumate®

NEMATOCIDAL PLUS

Make ideal nutrients for precision agriculture

COMPOSITION	COMPOSITION
Suaeda Extract	>5%
Saponin Essence	>20%
Agropha PGA	>20%
Chito Oligosaccharide	>10%
Amino Acid Zn	>10%
Water Soluble	100%
Physical Form:	80 MESH POWDER

DOSAGE & APPLICATION:

- Root Drenching:** Dilute 500-800x, drench evenly around crop root zones. Apply 2-3 times at 10-14 day intervals, ideal for nematode occurrence period and post-damage recovery.
- Drip Irrigation:** Dilute 800-1000x, inject into the drip system. Apply every 10-14 days for 2-3 consecutive times, suitable for large-area nematode prevention and control in greenhouse and open fields.
- Soil Treatment:** Dilute 300-500x, mix with soil before planting or transplanting. Use 1000-1500ml per mu, effective for nematode prevention in nursery beds and newly cultivated fields.

KEY BENEFITS:

- Ultra-High Saponin Efficacy:** 60% natural plant-derived saponin strongly disrupts nematode cell membranes, achieving rapid mortality of juvenile and adult nematodes, and effectively inhibiting egg hatching, with enhanced targeted control and longer-lasting effect compared to conventional formulations.
- Fulvic Acid Synergy:** 35% fulvic acid boosts solubility and soil penetration of saponin, activates beneficial soil microorganisms to suppress nematode proliferation, improves soil aggregate structure, and supplements organic nutrition to coordinate root growth.
- IBA Root Regeneration:** 4% IBA (a natural plant growth regulator) promotes root cell division and elongation, accelerates the repair of root systems damaged by nematodes, enhances root anchoring and nutrient absorption capacity, and improves crop survival rate and stress resistance.
- Manitol Enhancement:** 1% manitol maintains soil moisture, further improves the bioavailability of saponin and fulvic acid, relieves root stress caused by nematode infestation, and speeds up crop rejuvenation.
- Bio-Safe & Efficient:** Composed of natural and plant-derived ingredients, it is non-toxic to beneficial organisms, safe for crops and the environment, suitable for green and organic farming; liquid form ensures direct delivery to root zones with no residue accumulation.



Function Introduction

NEMATOCIDAL PLUS high-potency bio-nematicidal liquid: 60% saponin, 35% fulvic acid, 4% IBA, kills nematodes, promotes roots, boosts soil for fruits, vegetables, flowers, cash crops.

Compatibility

Compatible with bio/organic fertilizers, regulators; avoid acids, alkalis, nematicides, copper; dissolve first, test small.

Storage & Precautions

Store cool dry ventilated 5-35°C; avoid sun/heat; keep acids kids; rinse if contact.



Ihumate®



ALGAMAX

Make ideal nutrients for precision agriculture



Function Introduction

ALGAMAX comprehensive liquid fertilizer: N/P/K/Ca/Mg, alginate oligosaccharide, trace elements, rapid dissolution, boosts growth, stress resistance, quality for all crops.

Compatibility

Compatible with fertilizers, pesticides, regulators; avoid acids, alkalis, high-P; dissolve first, test small before use.

Storage & Precautions

Store cool dry ventilated 5-35°C; avoid sun/heat; keep acids kids; rinse if contact.



COMPOSITION		COMPOSITION	
N:	>10%	P ₂ O ₅ :	>4%
K ₂ O:	>4%	CaO:	>12%
MgO:	>4%	Alginate Oligosaccharide:	>2%
B, Fe, Mn, Zn, Cu, Mo, Ti, Se>3%		Physical Form:	DENSITY 1:1.4

DOSAGE & APPLICATION:

- Foliar Spray: Dilute 800-1200x, spray evenly on leaf surfaces. Apply 2-3 times at 7-10 day intervals, in cool mornings or evenings—suitable for all growth stages, especially seedling and flowering stages.
- Drip Irrigation: Dilute 1000-1500x, inject into the drip system. Apply every 7-10 days for 2-3 consecutive times, ideal for balanced nutrition supplementation throughout the entire growth cycle.
- Soil Drenching: Dilute 1500-2000x, drench around crop root zones. Use 500-800mL per mu each time, effective for improving soil nutrient status and supporting root development.

KEY BENEFITS:

- Multi-Nutrient Balanced Supply: N>10%, P₂O₅>4%, K₂O>4% provide basic macro-nutrition, while CaO>12% and MgO>4% strengthen cell walls, promote chlorophyll synthesis, and prevent deficiency symptoms like blossom-end rot and yellowing leaves.
- Alginate Oligosaccharide Efficacy: >2% alginate oligosaccharide boosts crop stress resistance (drought, disease), activates beneficial soil microorganisms, and enhances nutrient absorption efficiency of roots and foliage.
- Rich Trace Elements: Total content of 8 trace elements (B, Fe, Mn, Zn, Cu, Mo, Ti, Se)>3% ensures comprehensive micronutrition, supports enzyme activity, photosynthesis and reproductive growth, avoiding micronutrient deficiency.
- Synergistic Nutrition Effect: Macro, medium, trace elements and alginate oligosaccharides work together to optimize soil fertility, improve crop vitality, and enhance yield and quality comprehensively.
- Liquid Efficiency: Rapidly water-soluble, easy to apply via various irrigation systems, delivers targeted nutrition to all plant parts, and avoids equipment clogging.



CALCIUM AMINO SUSP.

Make ideal nutrients for precision agriculture

COMPOSITION	COMPOSITION
CaO:	>700 g/L
Amino acid:	>20 g/L
Suspension Liquid	
Physical Form:	DENSITY 1:1.67

DOSAGE & APPLICATION:

- Foliar Spray:** Shake thoroughly before use, then dilute 800-1500x and spray evenly on leaf and fruit surfaces. Apply 2-3 times at 7-10 day intervals, preferably in cool mornings or evenings—ideal for the fruit expansion stage.
- Drip Irrigation:** Shake thoroughly before use, dilute 1000-2000x, and inject into the drip system. Apply every 10-14 days for 2-3 consecutive times, suitable for both seedling and fruiting stages.
- Soil Drenching:** Shake thoroughly before use, dilute 1500-2500x, and drench around crop roots. Use 300-500mL per mu each time, which is effective for correcting soil-borne calcium deficiency.

KEY BENEFITS:

- High-Concentration Calcium Supply:** With CaO>700g/L, it provides abundant available calcium, rapidly correcting deficiency symptoms (e.g., blossom-end rot, fruit cracking, weak stalks) and supporting cell wall formation and healthy fruit development.
- Amino Acid Chelation:** Over 20g/L amino acids chelate calcium ions, reducing soil fixation and inter-element antagonism, facilitating calcium transport to fruits and new tissues, and enhancing overall calcium bioavailability.
- Stable Suspension System:** The suspended liquid form ensures uniform nutrient dispersion without sedimentation, delivering long-lasting, consistent calcium supply throughout the entire crop growth cycle.
- Quality & Stress Enhancement:** The synergistic effect of calcium and amino acids reinforces crop structure, minimizes fruit drop and cracking, and boosts resistance to environmental stress and pathogens.
- Easy Application:** Compatible with conventional irrigation and spray systems, convenient for large-scale use, and maintains nutrient stability without clogging equipment.



Function Introduction

CALCIUM AMINO SUSP.: high-concentration, suspension tech, CaO>700g/L, amino>20g/L, boosts Ca absorption, fixes deficiency, improves quality for high-calcium crops.

Compatibility
Compatible with fertilizers, pesticides, regulators; avoid alkalis/phosphorus/calcium; test small; shake well before use.

Storage & Precautions
Store cool dry ventilated 5-35°C; avoid sun/heat; keep acids/kids; rinse if contact.



Ihumate

DOCTOR PLANT

Make ideal nutrients
for precision
agriculture



Function Introduction

DOCTOR PLANT multi-functional liquid: N/P/K, oligosaccharides, amino acids, full nutrition, boosts activity, soil health, for fruits, vegetables, grains, cash crops.

Compatibility

Highly compatible with most water-soluble fertilizers, pesticides and growth regulators. Avoid mixing with strong acids/alkalis or high-

Storage & Precautions

Store cool dry ventilated 5-35°C; avoid sun/heat; keep acids/kids; rinse if contact.



Ihumate®

COMPOSITION		COMPOSITION	
N:	>60g/L	P:	>20g/L
K ₂ O:	>80g/L	Oligosaccharides:	>35g/L
Amino acid:	>80g/L	Organic matter:	>150g/L
Glucose:	>50g/L	Boron, Iron, Zinc ,Mg>	25g/L
Physical Form:	DENSITY 1:1.3		

DOSAGE & APPLICATION:

- Foliar Spray: Dilute 800-1500x, spray evenly on leaf surfaces; apply 2-3 times every 7-10 days in cool mornings or evenings.
- Drip Irrigation: Dilute 1000-2000x, inject into the irrigation system; apply every 10-14 days for 2-3 consecutive times.
- Soil Drenching: Dilute 1500-2500x, drench around crop roots; suitable for seedling stage and stress recovery.

KEY BENEFITS:

- Balanced Macro-Nutrition: High NPK content (N>60g/L, P>20g/L, K₂O>80g/L) fuels vigorous growth, promotes flowering and fruiting, and significantly improves crop yield.
- Powerful Biostimulation: 80g/L amino acids and 35g/L oligosaccharides enhance root development, strengthen stress resistance (drought, disease), and accelerate nutrient absorption.
- Rich Organic Nutrition: 150g/L organic matter and 50g/L glucose optimize soil structure, activate beneficial microorganisms, supplement carbon sources, and improve soil fertility sustainably.
- Comprehensive Micronutrients: Total boron, iron, zinc and magnesium >25g/L prevents micronutrient deficiency, boosts photosynthesis, and ensures balanced crop growth.
- High-Efficiency Liquid Form: Instantly water-soluble, fast absorption via roots and foliage, high utilization rate, and flexible application for all growth stages.



BORON SEAWEED

Make ideal nutrients for precision agriculture

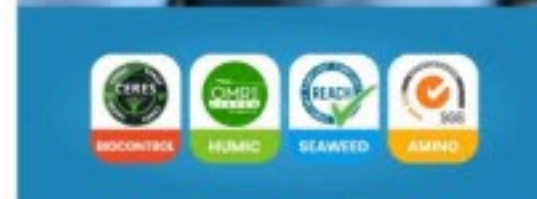
COMPOSITION	COMPOSITION
Boron:	>15%
Seaweed Extract:	>2%
Physical Form:	DENSITY 1:1.37

DOSAGE & APPLICATION:

- Foliar Spray:** Dilute 800-1500x, spray leaves at key stages; 2-3 times/7-10 days; avoid heat/rain.
- Drip/Flush:** Dilute 1500-2500x; 1-2kg/mu (field) or 2-3kg/mu (fruits/veggies) every 10-14 days.
- Seed Treatment:** Dilute 2000-3000x; soak 6-8h or dress; boost germination and seedling immunity.
- Fertilizer Blend:** Add 2-4% to water-soluble fertilizers for synergistic efficacy.

KEY BENEFITS:

- Signal Transduction Activation:** High-purity chito oligosaccharide acts as a signal molecule, triggering crop defense pathways, rapidly inducing stress-resistant enzymes, and strengthening immunity against pathogens and adverse environments.
- Superior Compatibility:** Compatible with water-soluble fertilizers, pesticides, and regulators; synergizes with other inputs to amplify efficacy, no antagonistic effects, ideal for compound fertilizer formulas.
- Potent Biostimulation:** Stimulates root development and photosynthesis, regulates crop metabolism, accelerates nutrient absorption, and promotes balanced growth of roots, stems, and fruits.
- Rich Organic Matter:** >50% organic matter improves soil structure, enriches fertility, and fosters beneficial microbial activity for sustainable farming.
- High Efficacy:** 100% water-soluble for fast absorption, no residue; 90%+ purity ensures strong bioactivity, outperforming conventional products.



Function Introduction

Chito Oligosaccharide Fertilizer: >90% chito oligosaccharide, >50% organic matter, full specs, high compatibility, boosts stress resistance, growth, yield and quality for all crops.

Compatibility

Compatible with fertilizers, pesticides, regulators; pH4-5, avoid alkalis; small test before mass compounding

Storage & Precautions

Store cool dry ventilated 5-35°C; avoid sun/heat; keep acids kids; rinse if contact.



Ihumate®



HUMIMAX

Make ideal nutrients for precision agriculture

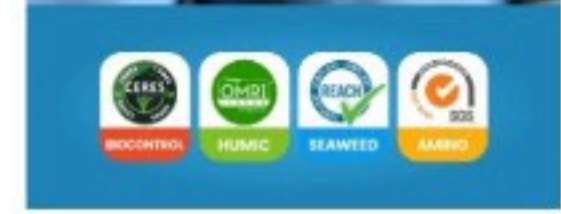
COMPOSITION	COMPOSITION
Humic acid:	>20%
Fulvic acid:	>15%
Potassium:	>4%
Physical Form:	DENSITY 1:1.3

DOSAGE & APPLICATION:

- Foliar Spray:** Dilute 1000-2000x, spray evenly on leaf surfaces and flower clusters. Apply 2-3 times at 7-10 day intervals, preferably in cool mornings or evenings—ideal for bud stage, flowering stage and young fruit stage.
- Drip Irrigation:** Dilute 1500-2500x, inject into the drip system. Apply every 10-14 days for 2-3 consecutive times, suitable for seedling stage, bud stage and fruiting stage.
- Soil Drenching:** Dilute 2000-3000x, drench around crop roots. Use 300-500mL per mu each time, effective for correcting soil-borne boron deficiency and supporting root and reproductive growth.

KEY BENEFITS:

- High Humic Acid Content:** Humic Acid>20% improves soil aggregate structure, enhances water and fertilizer retention capacity, and reduces nutrient leaching in sandy or barren soils.
- Fulvic Acid Synergy:** Fulvic Acid>15% boosts nutrient solubility and mobilization, promotes root absorption of minerals and potassium, and activates beneficial soil microorganisms.
- Moderate Potassium Supply:** Potassium>4% provides sustained available potassium, supports nutrient transport and water regulation, and enhances crop lodging and stress resistance.
- Triple Synergistic Effect:** Humic acid, fulvic acid and potassium work together to optimize soil fertility, improve nutrient utilization rate, and promote robust crop growth and yield increase.
- Wide Adaptability:** Compatible with conventional irrigation and spray systems, suitable for large-scale agricultural use and all soil types, especially degraded soils.



Function Introduction

HUMIMAX high-efficiency liquid fertilizer: >20% humic acid, >15% fulvic acid, >4% potassium, improves soil, boosts nutrients, suits all crops and poor soils.

Compatibility
Compatible with fertilizers, pesticides, regulators; no P/S reaction; avoid alkalis; test unfamiliar products first.

Storage & Precautions
Store cool dry ventilated 5-35°C; avoid sun/heat; keep acids kids; rinse contact.



Ihumate®

FULVIMAX

Make ideal nutrients
for precision
agriculture



Function Introduction

FULVIMAX high-performance liquid fertilizer: >40% fulvic acid, >10% alginic acid, >24% organic carbon, activates soil, supplements carbon, boosts vitality for all crop.

Compatibility

Compatible with fertilizers, pesticides, regulators; no P/S reaction; avoid alkalis; test unfamiliar products first.

Storage & Precautions

Store cool dry 5-35°C; avoid sun/heat; keep acids kids; rinse contact.



Ihumate®

COMPOSITION	COMPOSITION
Fulvic acid:	>40%
Alginic acid:	>10%
Organic carbon:	>24%
Physical Form:	DENSITY 1:1.3

DOSAGE & APPLICATION:

- Foliar Spray: Dilute 1000-2000x, spray evenly on leaf surfaces and flower clusters. Apply 2-3 times at 7-10 day intervals, preferably in cool mornings or evenings—ideal for bud stage, flowering stage and young fruit stage.
- Drip Irrigation: Dilute 1500-2500x, inject into the drip system. Apply every 10-14 days for 2-3 consecutive times, suitable for seedling stage, bud stage and fruiting stage.
- Soil Drenching: Dilute 2000-3000x, drench around crop roots. Use 300-500mL per mu each time, effective for correcting soil-borne boron deficiency and supporting root and reproductive growth.

KEY BENEFITS:

- Ultra-High Fulvic Acid Content: Fulvic Acid >40% strongly boosts nutrient solubility and mobilization, promotes root absorption of minerals, and activates beneficial soil microorganisms to optimize nutrient cycle.
- Alginic Acid Synergy: Alginic Acid >10% enhances crop stress resistance (drought, salinity), strengthens cell structure, and works with fulvic acid to improve water and nutrient retention capacity.
- Abundant Organic Carbon Supply: Organic Carbon >24% directly supplements crop carbon sources, accelerates photosynthetic product accumulation, and promotes robust metabolic activity and growth.
- Triple Synergistic Effect: Fulvic acid, alginic acid and organic carbon collaborate to activate soil fertility, improve nutrient utilization rate, and enhance crop yield and quality comprehensively.
- Wide Adaptability: Compatible with conventional irrigation and spray systems, suitable for large-scale agricultural use and all soil types, including sandy, loamy and clay soils.



BIOSTIMU

Make ideal nutrients
for precision
agriculture



Function Introduction

High-efficiency liquid biostimulant (BIOSTIMU):
>45% free amino acids, >5% fulvic acid, boosts
crop vitality, nutrient absorption and soil micro-
ecological balance.

Compatibility

Compatible with most fertilizers, pesticides,
regulators; avoid strong acids/alkalis/copper;
conduct small test before large-scale use.

Storage & Precautions

Store cool dry ventilated 5-35°C; avoid sun/heat;
keep acids/kids; rinse if contact.



Ihumate®

COMPOSITION	COMPOSITION
Amino Acid:	>45%
Fulvic Acid:	>5%
Micro N:	>5%
Others:	>40%
Physical Form:	DENSITY 1:1.3

DOSAGE & APPLICATION:

- Foliar Spray: Dilute 800-1500x, spray evenly on leaf surfaces; apply 2-3 times every 7-10 days in cool mornings or evenings.
- Drip Irrigation: Dilute 1000-2000x, inject into the irrigation system; apply every 10-14 days for 2-3 consecutive times
- Soil Drenching: Dilute 1500-2500x, drench around crop roots; suitable for seedling stage and stress recovery.

KEY BENEFITS:

- High Free Amino Acid Content: Over 45% free amino acids for direct crop absorption, accelerating protein synthesis and promoting robust growth of roots, stems and leaves.
- Fulvic Acid Boost: >5% fulvic acid improves soil structure, enhances nutrient mobilization and strengthens crop stress resistance.
- Mild Micro-element Nitrogen Supply: >5% micro-element nitrogen delivers mild, sustained nutrition, avoiding seedling burn from over-fertilization and supporting steady crop growth.
- Synergistic Formula Efficacy: 40%+ synergistic beneficial ingredients work in tandem with amino acids and fulvic acid, amplifying biostimulation effects and optimizing nutrient utilization.

